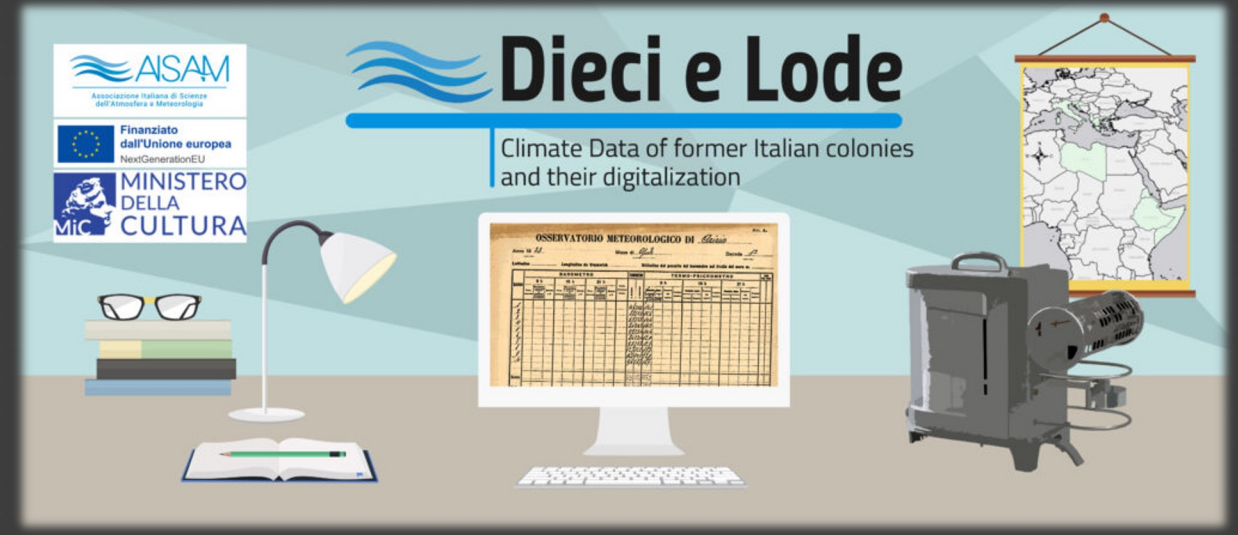




High-resolution and representative meteorological services, technologies, and data



ASAM
Associazione Italiana di Scienze dell'Atmosfera e Meteorologia

Finanziato dall'Unione europea
NextGenerationEU

MINISTERO DELLA CULTURA
MiC

Dieci e Lode

Climate Data of former Italian colonies and their digitalization

OSSEVATORIO METEOROLOGICO DI Alessandria

SISTEMI PRECIPITAZIONE	
DATA	VALORE
1	...
2	...
3	...
4	...
5	...
6	...
7	...
8	...
9	...
10	...

Radarmeteo



Innovative SME develops and delivers certified platforms and solutions for weather-climate monitoring and operations management. Radarmeteo supports organizations across various sectors in decision-making processes and risk analysis.

Hypermeteo



Innovative startup processes high-resolution datasets, indices, and scenarios for monitoring meteorological phenomena and climate change. All services are easily integrable thanks to an advanced API system.



What we do

Mission

Historical, real-time, and forecast meteorological and climatic datasets distributed on high-resolution digital territorial grids.

Policies for quality

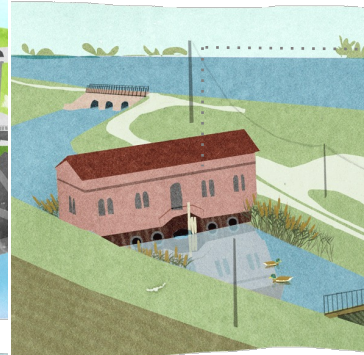
Radarmeteo and Hypermeteo are ISO 9001 and ISO/IEC 25000 certified for the provision of professional meteorological services and for the design, development, and supply of weather-climatic datasets.



Industries



UTILITIES

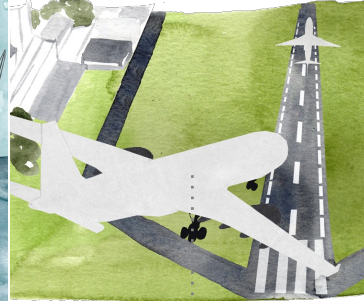


RECLAMATION CONSORTIA



TRANSPORT

OIL&GAS, MARITIME



SMART AGRICULTURE



AIRPORTS

INSURANCE&RISK ASSESSMENT



ENERGY

ADMINISTRATIONS AND CIVIL PROTECTION



References



Our team



The team consists of specialists under 35 with training in Atmospheric Physics, Engineering, Data Science, Statistics and Anthropology.

Radarmeteo

Weather Software Development

Risk management and
data analysis

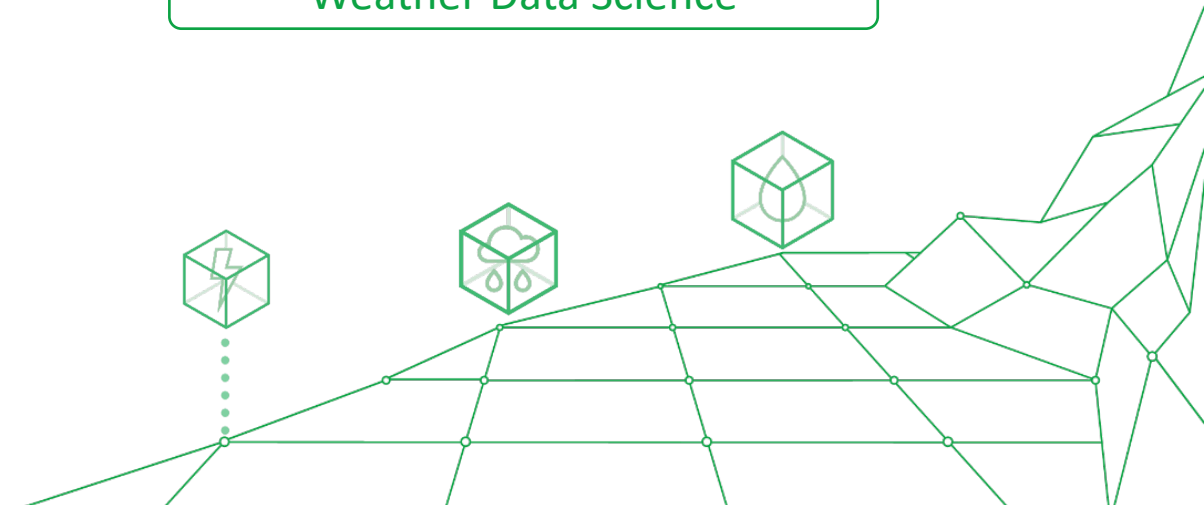
Forecasting and operational
support

Weather Networks Certification

Hypermeteo

Weather AI Development

Weather Data Science

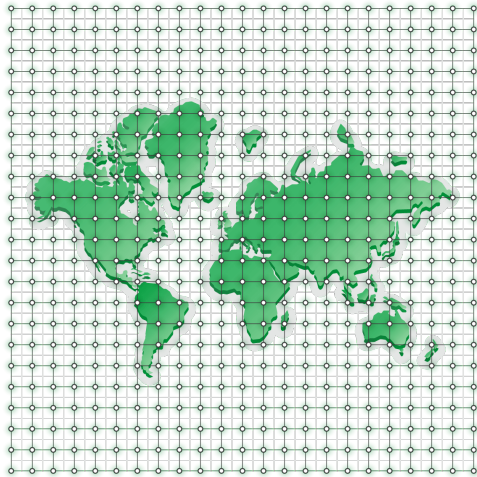




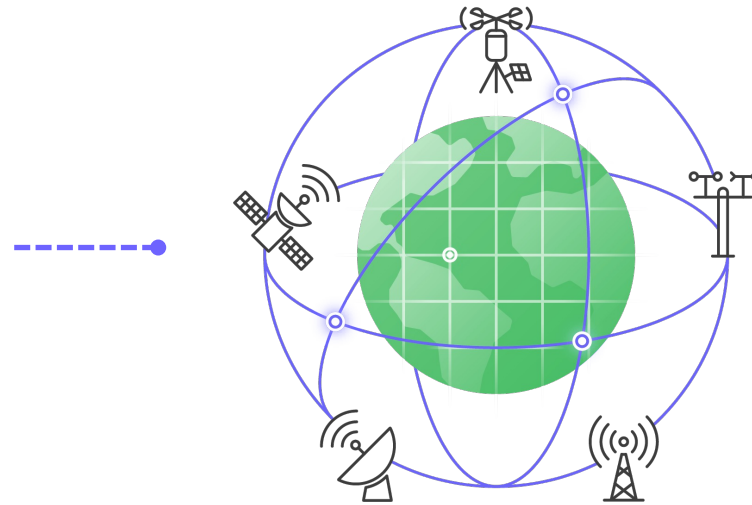
Hypermeteo

- Analysis, integration and provision of data on high-resolution grids
- Meteorological and climatological risk indicators
- Historical, real-time and forecast data

Our approach



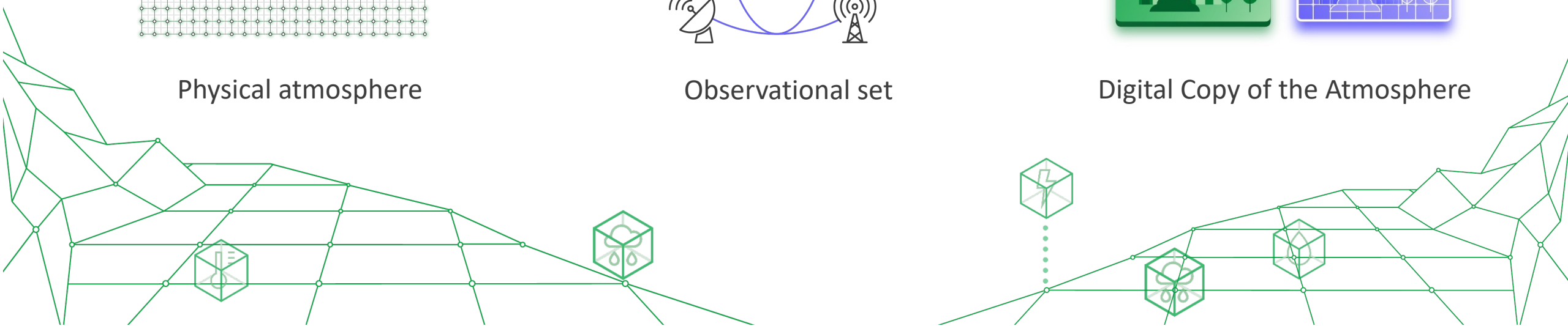
Physical atmosphere



Observational set



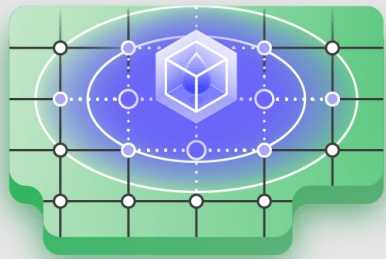
Digital Copy of the Atmosphere



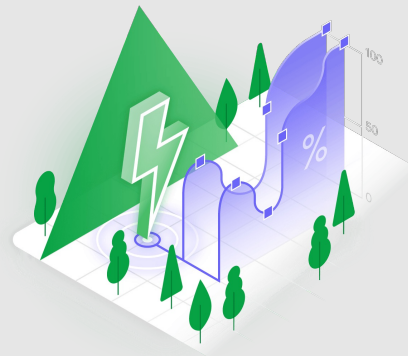


Solutions

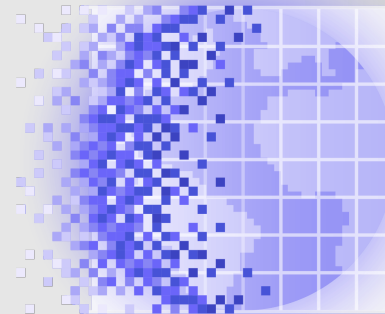
Hypermeteo offers solutions that meet the current market needs developing:



Data



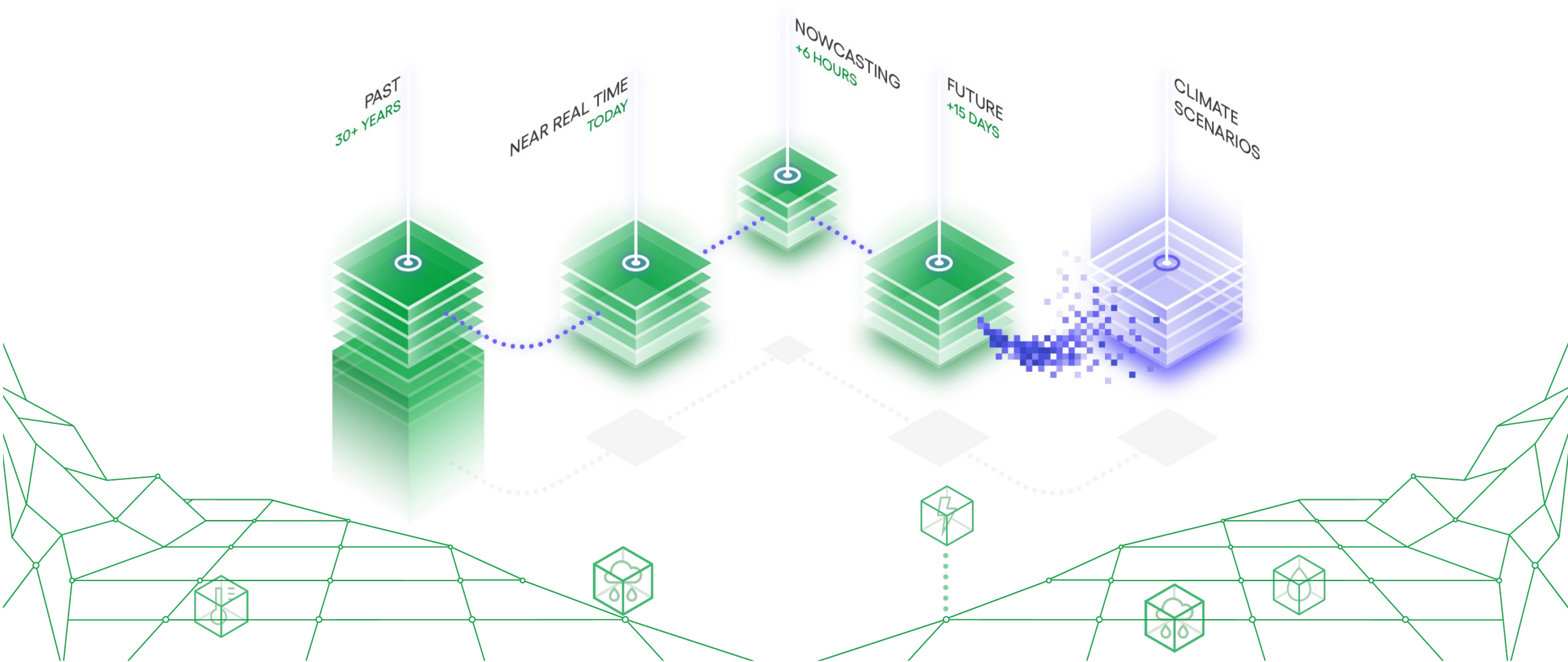
Indices



Scenarios

Hypermeteo develops weather and climate datasets on digital grids, with high spatial (1 km) and temporal resolution (hourly or sub-hourly), risk analysis and long-term climate scenarios based on IPCC datasets.

Datasets



The representative weather data



1. WMO – compliant

Data, coming from certified, official networks, comply with WMO standards to meet high-quality standards.

2. Verified

Data, coming from certified, official networks, comply with WMO standards to meet high-quality standards.

3. Integrable

Data can be easily integrated in third-party platforms and systems through robust APIs.



Integration with API system

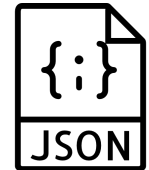


The Hypermeteo APIs (OGC compliant) allow retrieving datasets in various formats tailored to client needs, ensuring high performance and scalability.

TIME-SERIES



WFS



WMS



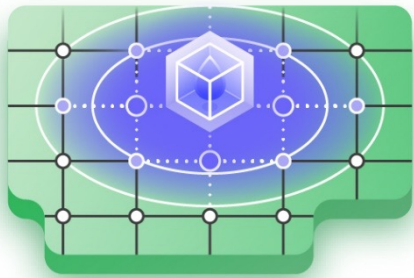
WCS





Processing techniques

Weather reanalysis



Method for "re-analyzing" historical data to develop homogeneous datasets (in space and time).

Nowcasting



Optimized forecast for the very short term (next 0-6 hours).

Ensemble Multimodel Forecast



Medium-term probabilistic forecast that exploits the simulation of several models (up to 15/30 days).



Data quality, control and validation

Procedures for:

- Increase the resolution
- Correct (e.g. BIAS)
- Reprocess the output variables of the reanalysis



Services



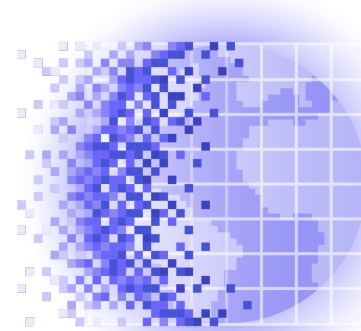
Data supply



Push notification



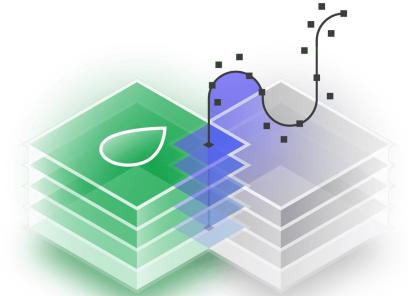
Early warning



Climate Sentinel®



Risk Index



Data analytics



Radarmeteo

Professional weather services

Decision support platforms and applications

Overview of services



Post-event

Support and consulting for
post-event management

Real-time

Continuous and precise
real-time monitoring

Forecast

Forecast alerts



MeteoCast[®]

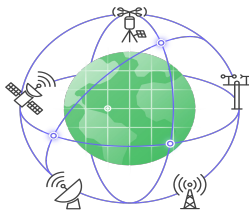
Integrated meteorological support platform



Interactive



Comprehensive



Global

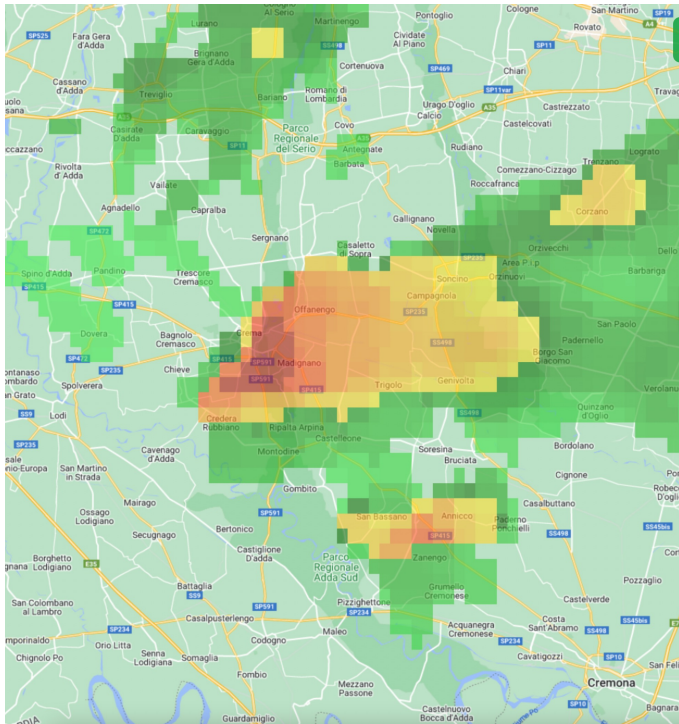
- accessible via the web, with no user or access limits, gathers all available meteorological information





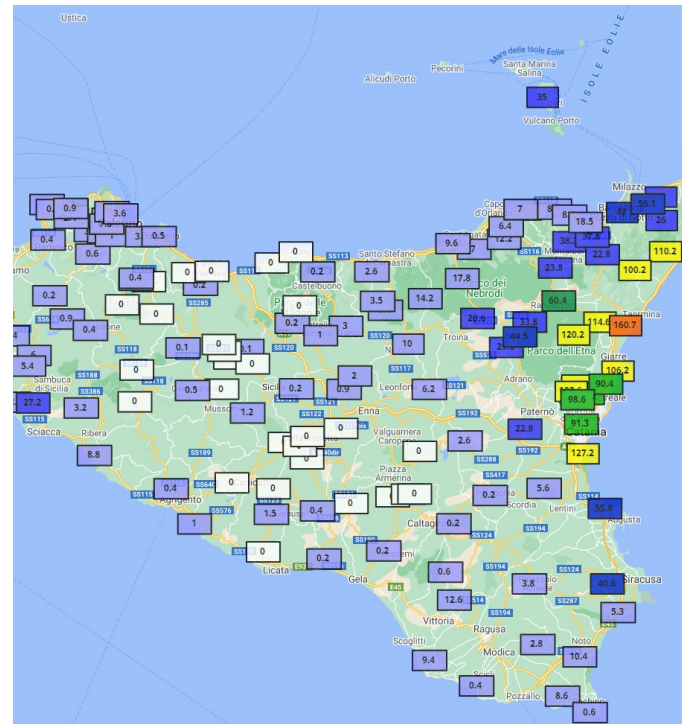
RadarCast[®]

Weather radar network data



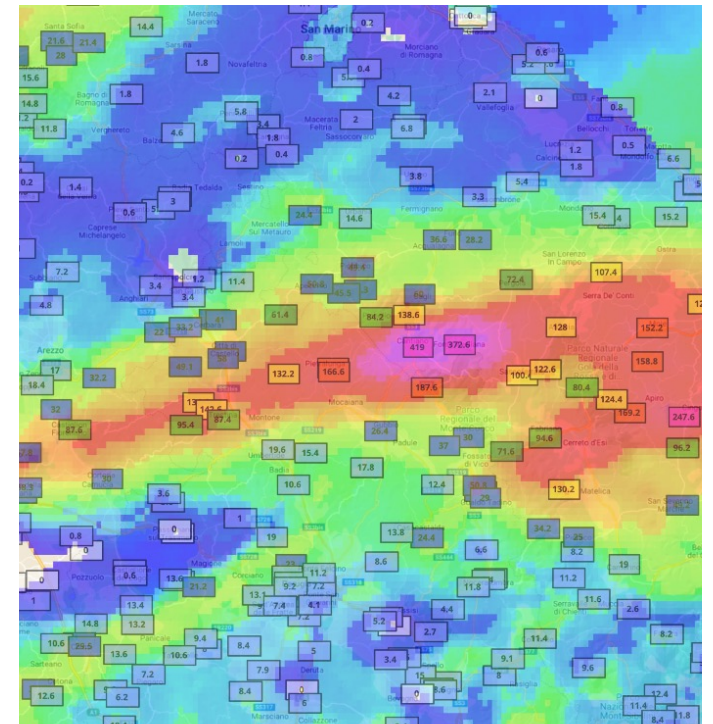
GisMeteotrigger[®]

Weather stations data



RainGis[®] & SnowGis[®]

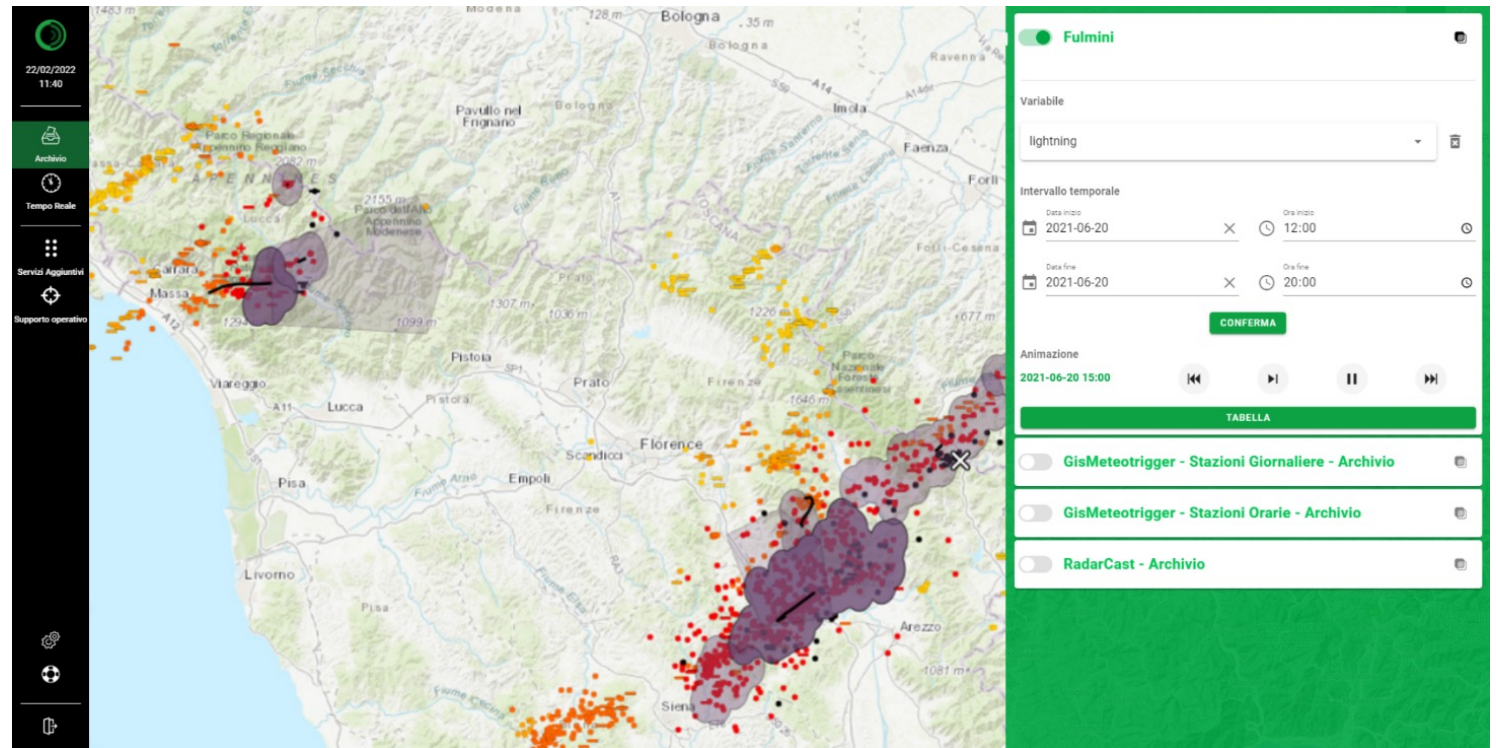
Rain and snow accumulation data from radar and stations



Lightning and thunderstorm monitoring



- ☐ Lightning as a premonitory
- ☐ Real-time tracking with indication of location, intensity, and travel direction

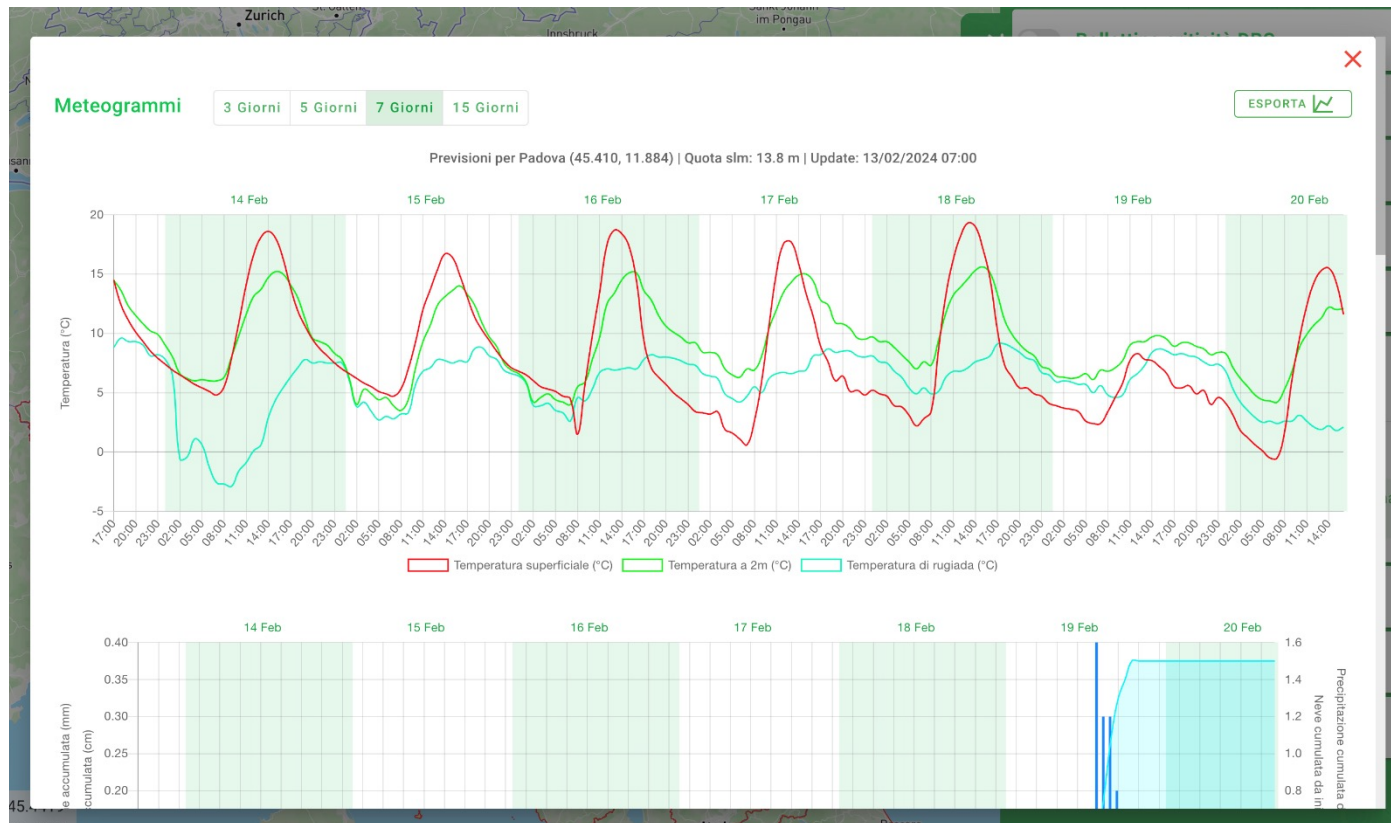




Forecasting Services

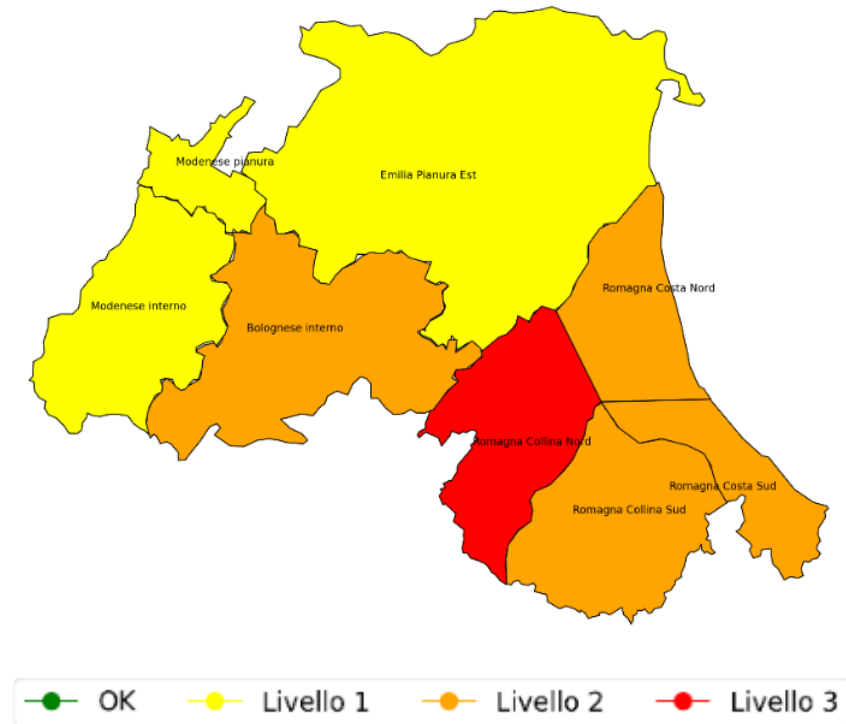
Meteograms and forecast models

Weather forecast up to the next 15 days



RainCast®

Accurate forecast of precipitation accumulations for the next 72 hours





Operational Support Services



On-call service for Meteorologists

Direct support

Telephone availability of Meteorologists every day of the year from 8 a.m. to 10 p.m.

Constant updating

Continuous support to inform customers about the intensity and evolution of the monitored phenomena.

Unique Number of Operations Room

Simple access to the service through a single number to be contacted in case of need.



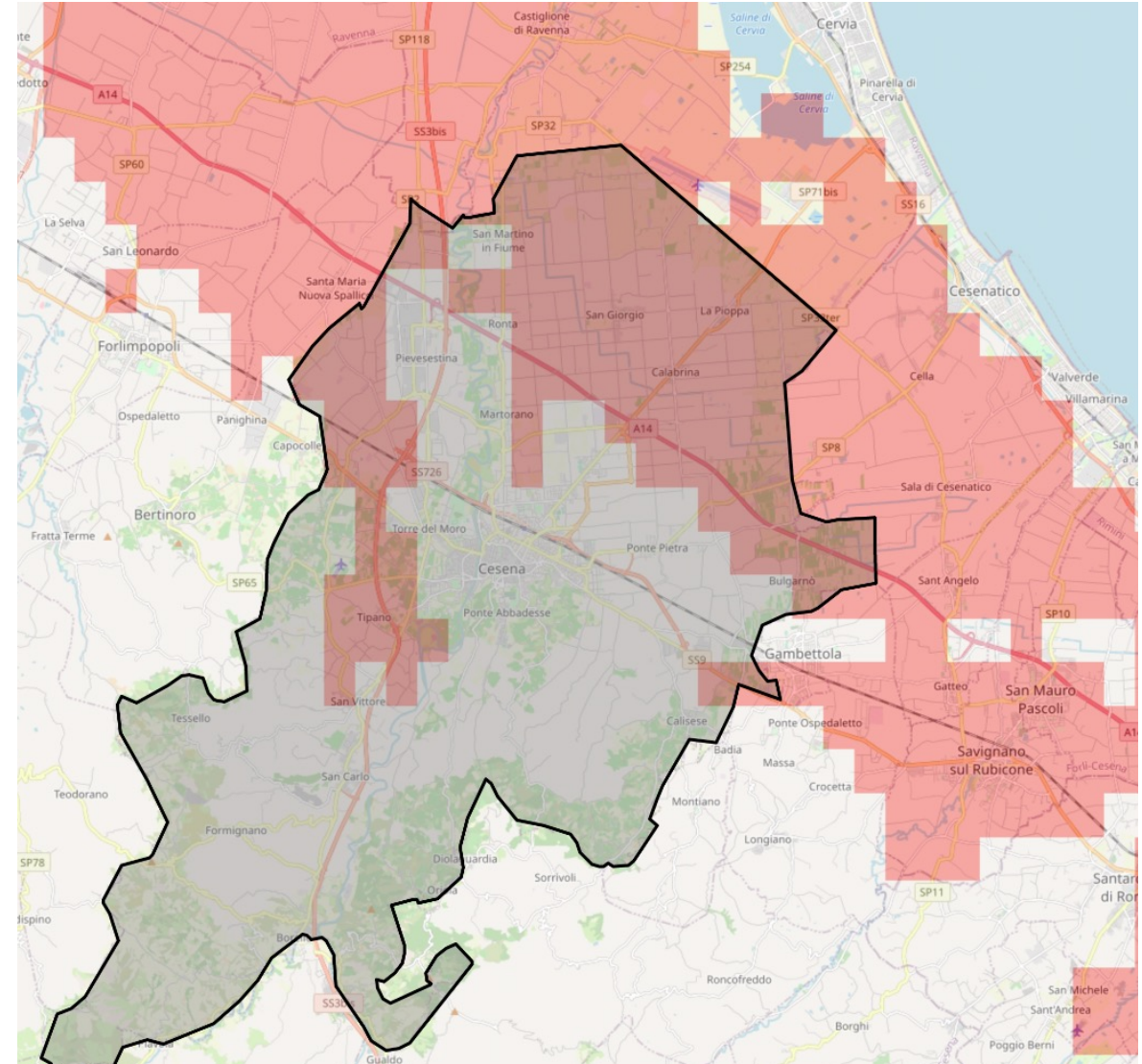


Meteotrigger[®]

Meteorological reports and reports for the verification of adverse weather conditions described in insurance contracts starting from certified, official and WMO-compliant data.

Alert Ex-Post[®]

Automated high-resolution verification (1 km) of exceedances of adverse weather conditions (excess rain, strong wind, hail, frost, etc.)





Compliance and certification of meteorological networks

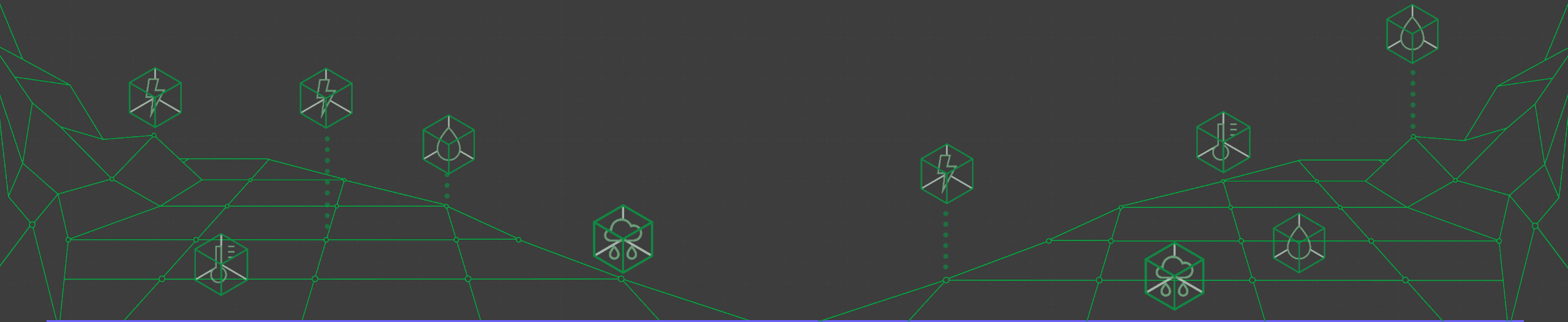
The service provides support in the design, compliance and certification of meteorological monitoring networks according to WMO guidelines.

Goal: obtain quality data, which can be integrated into decision support systems and compliant with risk management activities.





THANKS FOR YOUR TIME!



Radarmeteo

Innovative SME

Via IV Novembre, 117
35020 – Due Carrare (PD)
(+39) 049 9125902

www.radarmeteo.com
info@radarmeteo.com



Elisa Bortoli

Weather Software Developer

E-mail: elisabortoli@radarmeteo.com

Hypermeteo

Innovative startup

Via Nazionale, 181
00184 – Roma (RM)
(+39) 049 9125902

www.hypermeteo.com
info@hypermeteo.com

